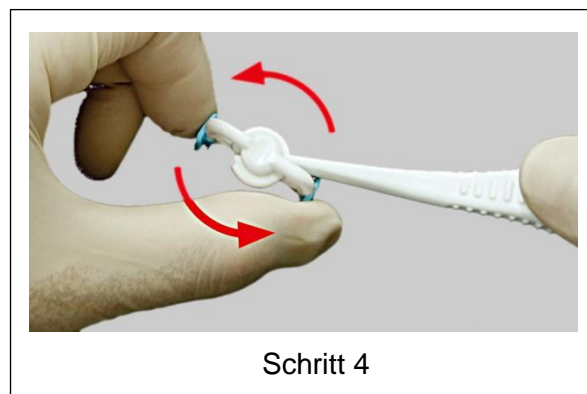
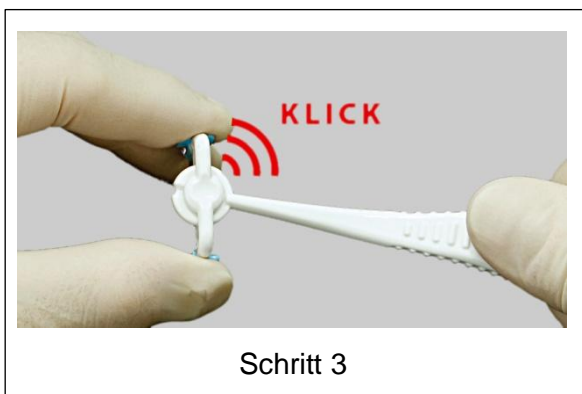
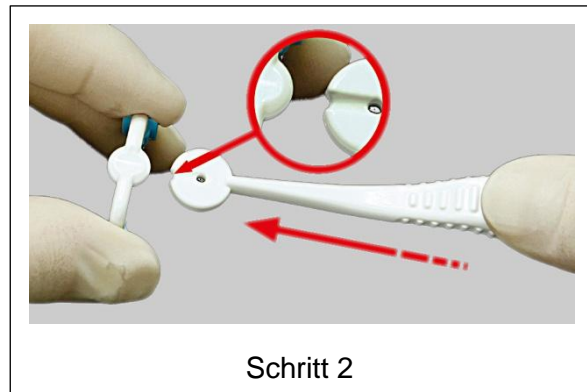
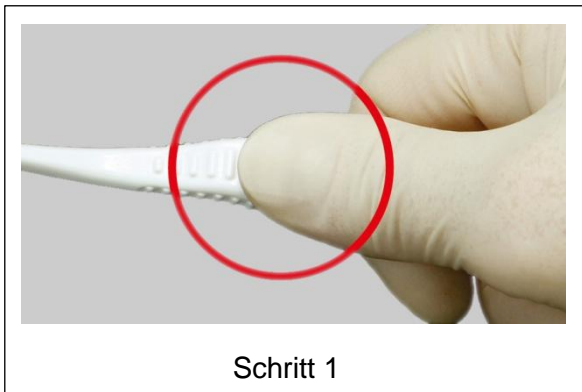
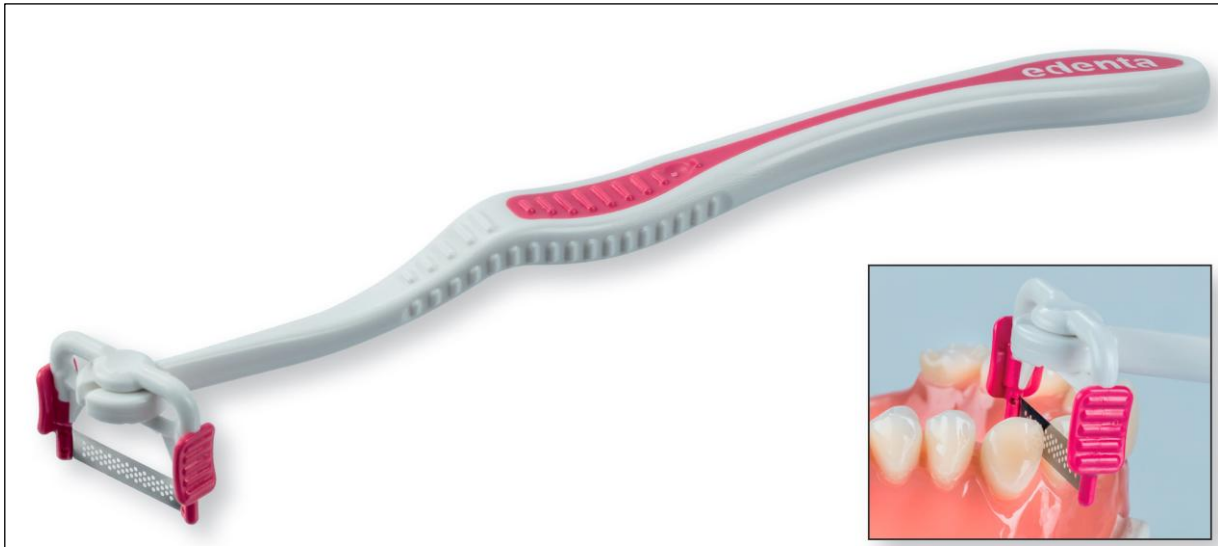
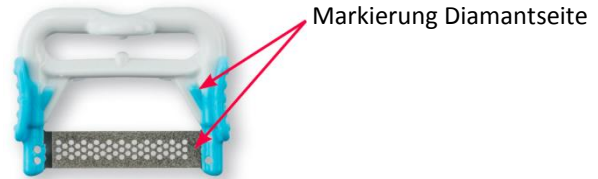


StripFIX Patent angemeldet No. 10 2018 126 369.4





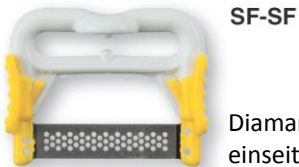
Diamantstreifenhalter



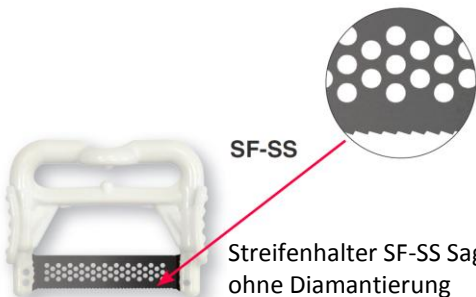
Diamantstreifenhalter SF-M Körnung mittel / blau – 45 µm / 0.13 mm, einseitig belegt



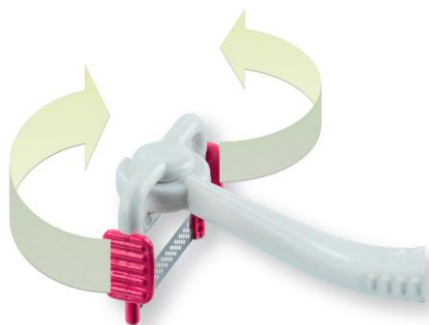
Diamantstreifenhalter SF-F Körnung fein / rot – 30 µm / 0.10 mm, einseitig belegt



Diamantstreifenhalter SF-SF Körnung superfein / gelb – 15 µm / 0.08 mm, einseitig belegt



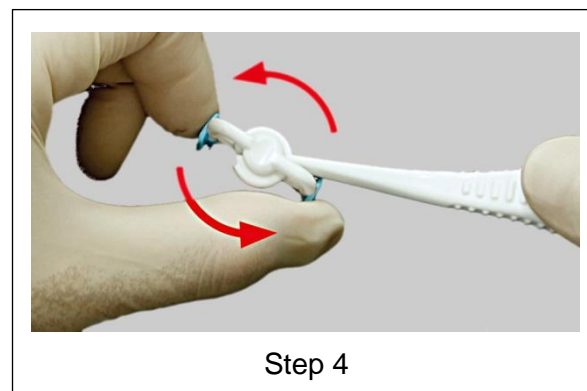
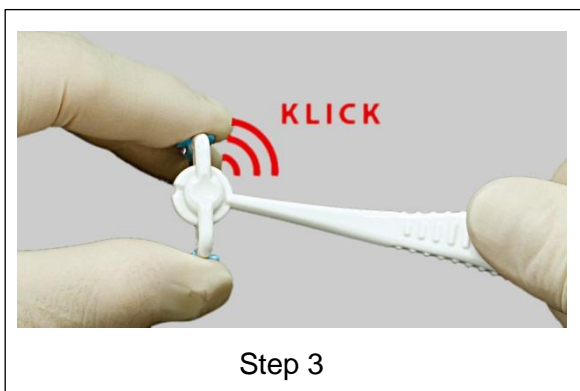
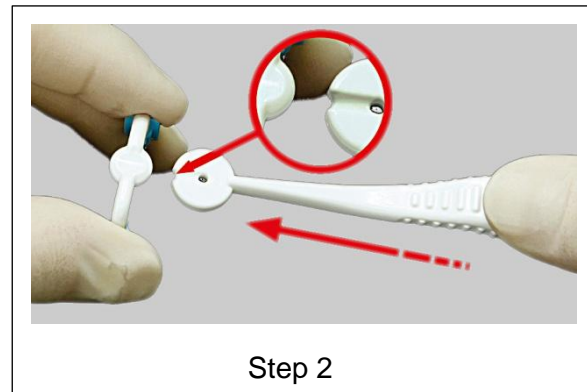
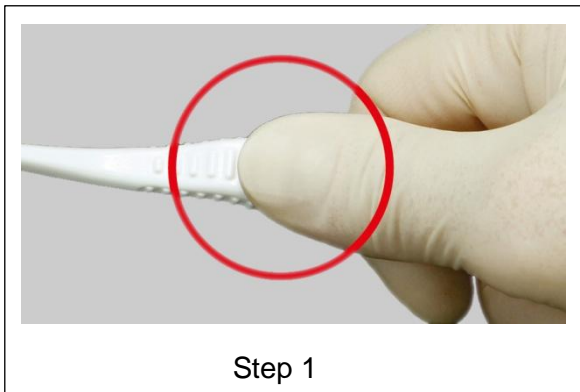
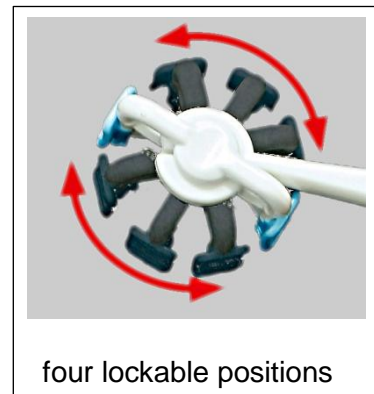
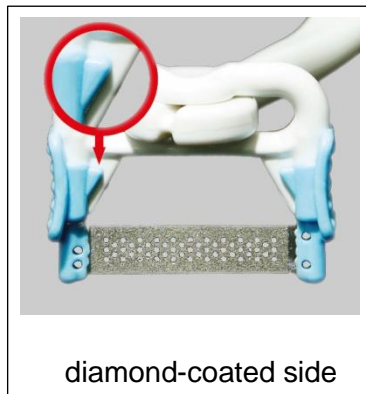
Streifenhalter SF-SS Sageverzahnung / weiss – 0.04 mm, ohne Diamantierung



StripFIX Diamantstreifenhalter Positionierung

Der schwenkbare Diamantstreifenhalter kann in je 4 Positionen einrasten. Damit wird die optimale Arbeitsposition (Winkel) des Diamantstreifens fixiert, um einen einfachen Zugang zu den vorderen und hinteren Zähnen in der Mundhöhle zu ermöglichen.

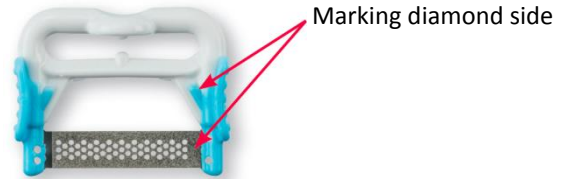
StripFIX Patent pending No. 10 2018 126 369.4





Art.-No. SF-H

Diamond strip holder



SF-M

Diamond strip holder SF-M, grit size, medium / blue – 45 µm / 0.13 mm, single-sided



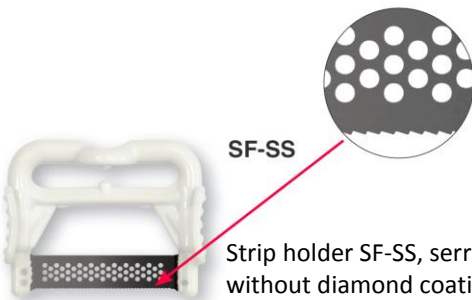
SF-F

Diamond strip holder SF-F, grit size, fine / red – 30 µm / 0.10 mm, single-sided



SF-SF

Diamond strip holder SF-SF, grit size, super fine / yellow – 15 µm / 0.08 mm, single-sided



SF-SS

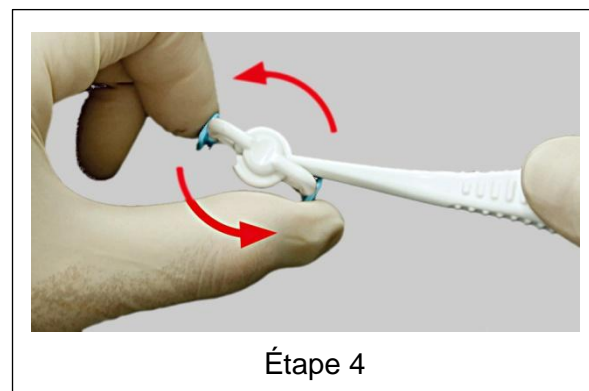
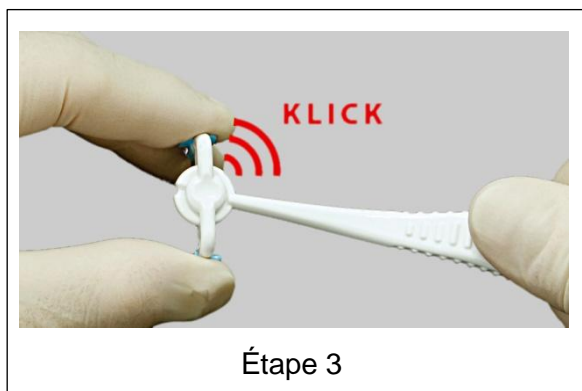
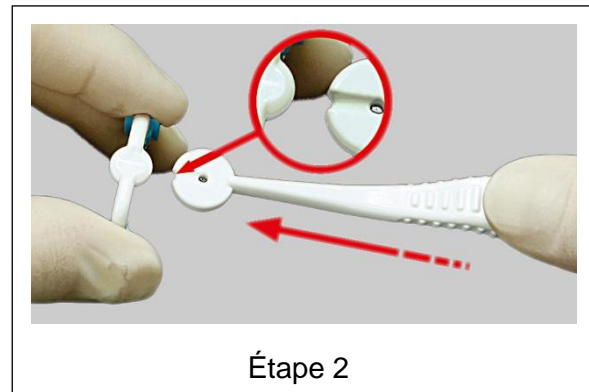
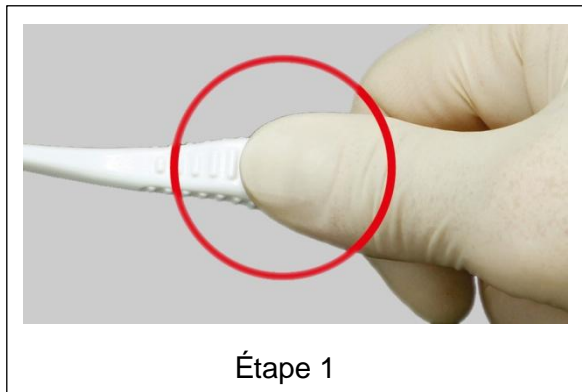
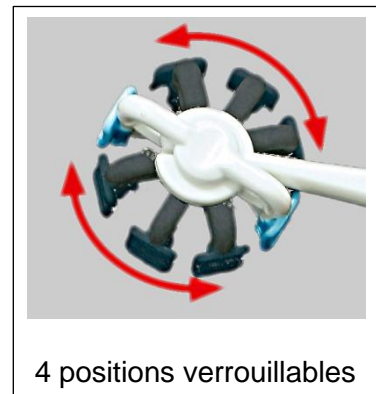
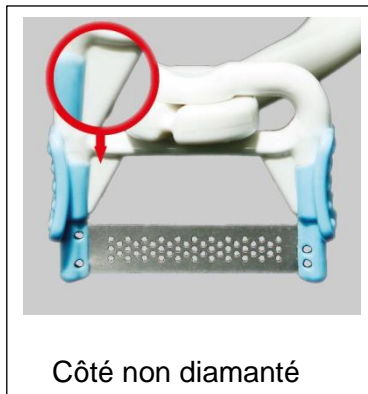
Strip holder SF-SS, serrated edge / white – 0.04 mm, without diamond coating



StripFIX diamond strip holder positioning

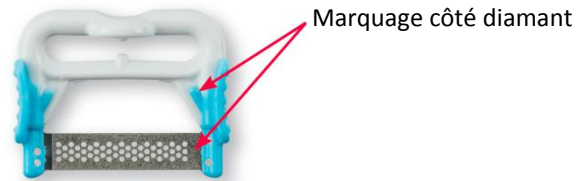
The swivel-mounted diamond strip holders can each be locked in 4 positions. This ensures that the optimum working position (angle) of the diamond strip is fixed to enable easy access to the anterior and posterior teeth in the oral cavity.

StripFIX Brevet en instance No. 10 2018 126 369.4





Supports pour strips diamantés



SF-M

Support pour strips diamantés SF-M grains moyens / bleus – 45 µm / 0.13 mm, recouverts d'un seul côté



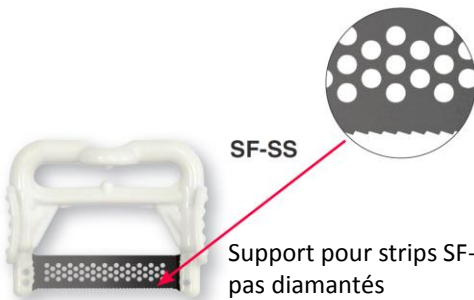
SF-F

Support pour strips diamantés SF-F grains fins / rouges – 30 µm / 0.10 mm, recouverts d'un seul côté



SF-SF

Support pour strips diamantés SF-SF grains supers fins / jaunes – 15 µm / 0.08 mm, recouverts d'un seul côté



SF-SS

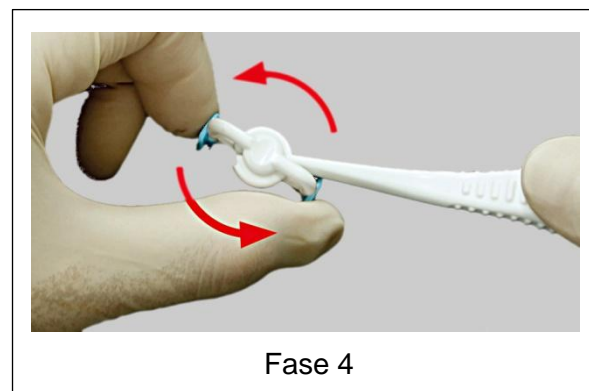
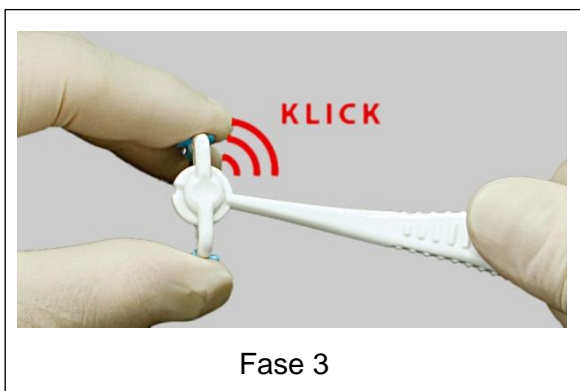
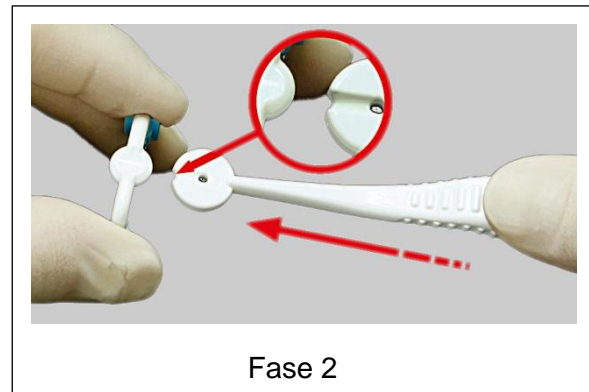
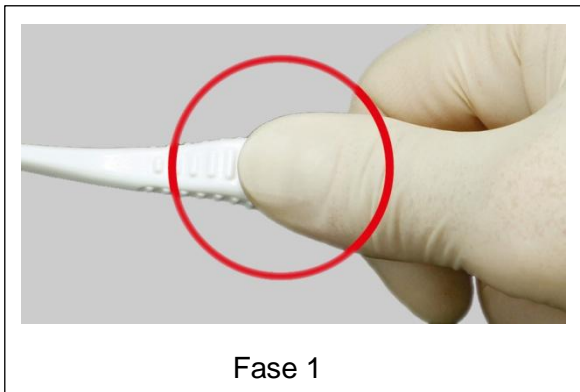
Support pour strips SF-SS dentelés / blancs – 0.04 mm, pas diamantés



Positionnement du support pour strips diamantés StripFIX

Le support pour strips diamantés pivotant peut être verrouillé dans 4 positions différentes; ce qui permet de fixer une position de travail optimale (angulation) du strip diamanté et d'accéder plus facilement aux dents antérieures et postérieures dans la cavité buccale.

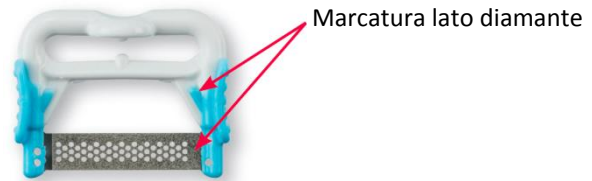
StripFIX Brevetto depositato No. 10 2018 126 369.4





Art.-No. SF-H

Supporto per strisce diamantate



SF-M

Supporto per strisce diamantate SF-M grana media / blu – 45 µm / 0.13 mm, diamantatura monolaterale



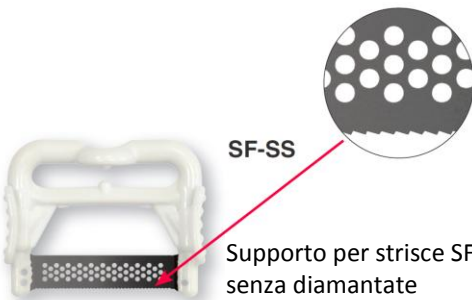
SF-F

Supporto per strisce diamantate SF-F grana fina / rossa – 30 µm / 0.10 mm, diamantatura monolaterale



SF-SF

Supporto per strisce diamantate SF-SF grana superfina / gialla – 15 µm / 0.08 mm, diamantatura monolaterale



SF-SS

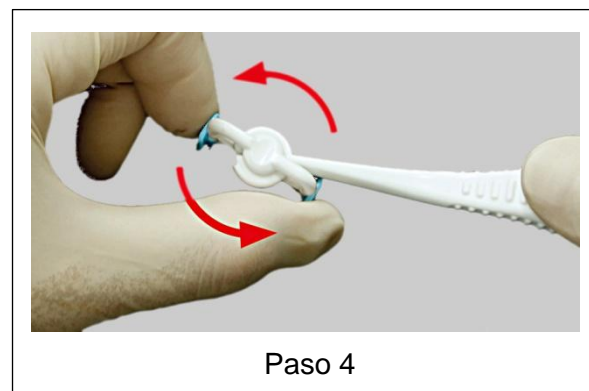
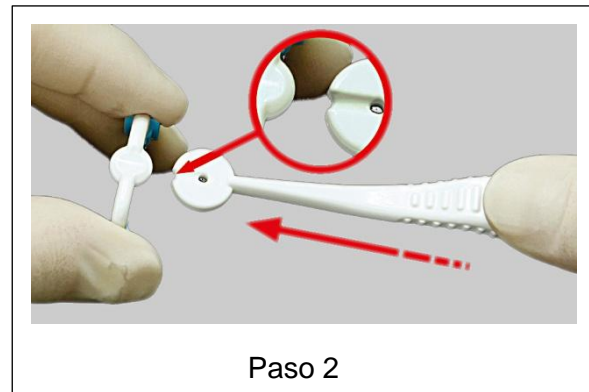
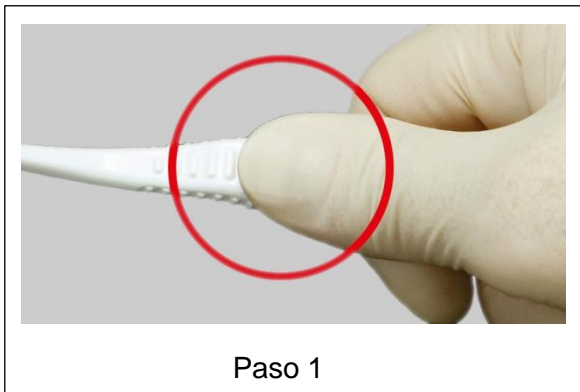
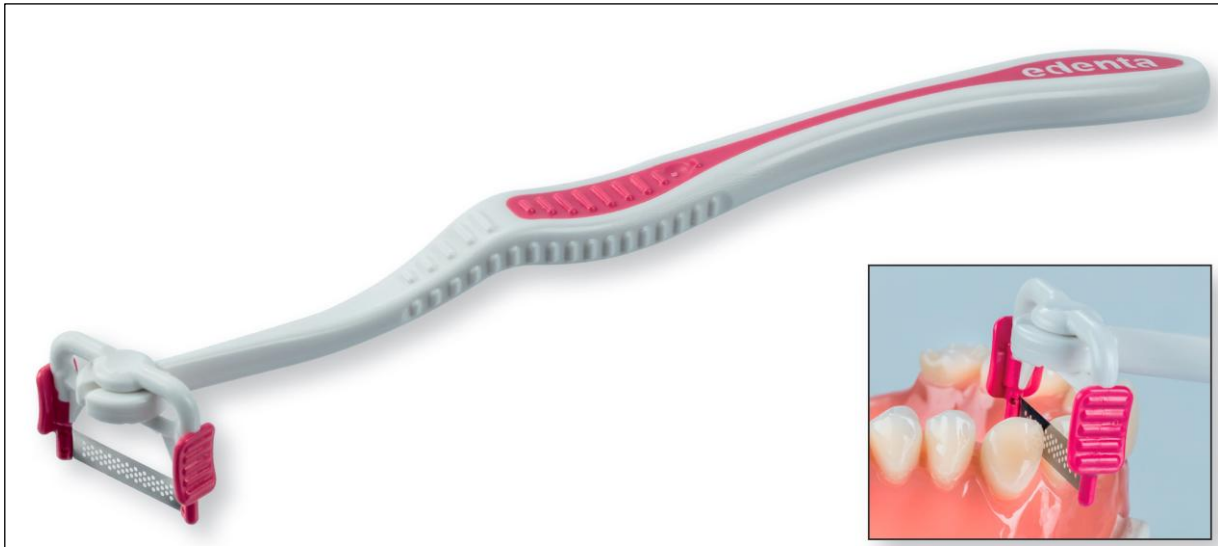
Supporto per strisce SF-SS dentatura a sega / bianca – 0.04 mm, senza diamantate



Posizionamento del supporto per strisce diamantate StripFIX

Il supporto girevole per strisce diamantate può essere fissato in 4 posizioni. In questo modo può essere orientato nella posizione (angolo) ottimale di lavorazione della striscia diamantata, per un più facile accesso ai denti anteriori e posteriori.

StripFIX Patente pendiente No. 10 2018 126 369.4





Soporte de tiras de pulido diamantadas



SF-M

Soporte de tiras de pulido diamantadas SF-M Grano medio / azul – 45 μm / 0.13 mm, un lado



SF-F

Soporte de tiras de pulido diamantadas SF-F Grano fino / rojo – 30 μm / 0.10 mm, un lado



SF-SF

Soporte de tiras de pulido diamantadas SF-SF Grano soeper fino / amarillo – 15 μm / 0.08 mm, un lado



SF-SS

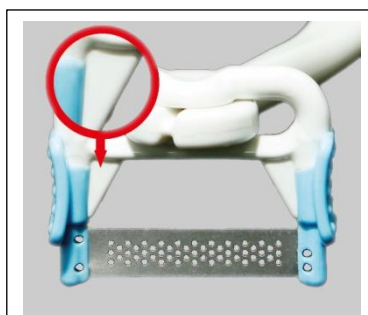
Soporte de tiras de SF-SS Dentado de sierra / blanco – 0.04 mm, sin diamantado



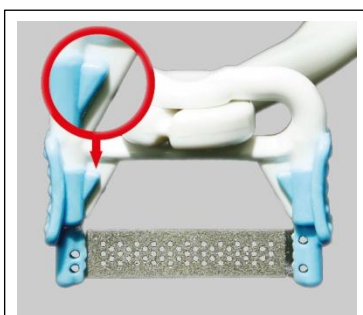
Posicionamiento de los soportes de tiras diamantadas StripFIX

El soporte de tiras de diamante puede ajustarse en 4 posiciones. De este modo se fija la posición de trabajo óptima (o ángulo) de las tiras diamantadas, permitiendo un acceso sencillo a dientes anteriores y posteriores en la cavidad oral.

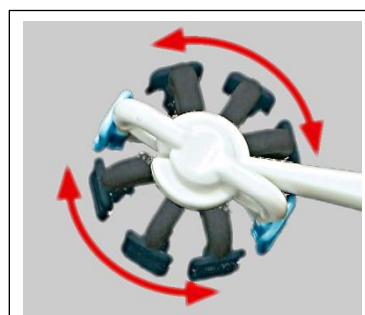
StripFIX Patente registada No. 10 2018 126 369.4



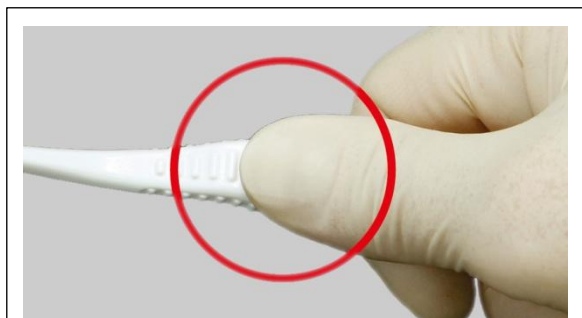
Face não diamantada



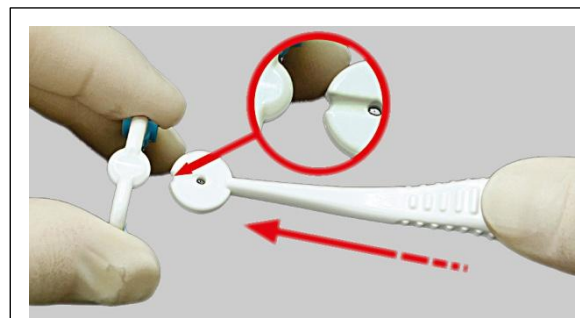
Face diamantada



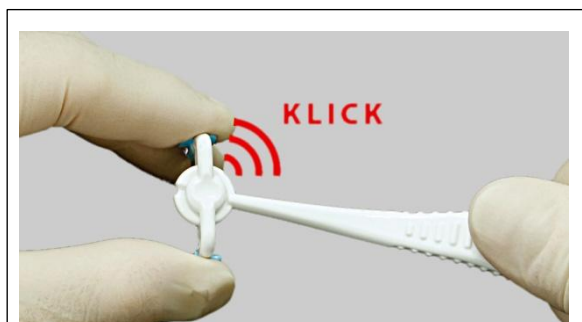
4 posições de encaixe



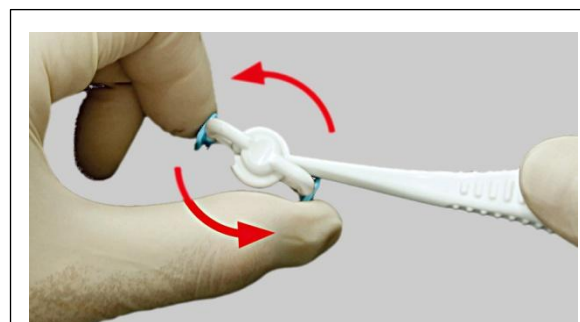
Passo 1



Passo 2



Passo 3



Passo 4



Art.-No. SF-H

Suporte para tiras de diamante



Marcação lateral diamantada



SF-M

Suporte de tira diamantada SF-M grão médio/ azul – 45 µm / 0.13 mm, revestimento unilateral



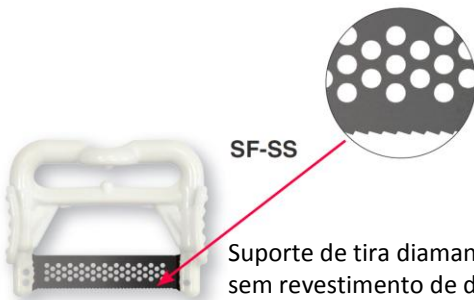
SF-F

Suporte de tira diamantada SF-F grão fino/ vermelho – 30 µm / 0.10 mm, revestimento unilateral



SF-SF

Suporte de tira diamantada SF-SF grão superfino/ amarelo – 15 µm / 0.08 mm, revestimento unilateral



SF-SS

Suporte de tira diamantada SF-SS dentado tipo serra/ branco – 0.04 mm, sem revestimento de diamante



StripFIX Posicionamento do suporte de tiras diamantadas

O suporte de tiras de acabamento é articulado e pode encaixar em 4 posições diferentes. É assim possível encontrar a posição de trabalho mais favorável (ângulo -/), que possibilita um acesso mais simples aos dentes anteriores ou posteriores no interior da cavidade oral.